
Castellum



**Luxembourg
Collectors Club**

3304 Plateau Drive
Belmont, CA 94002
U.S.A.

E-mail: lcc@luxcentral.com

Web: <http://www.luxcentral.com/stamps/LCC/>
Gary B. Little, President (gary@luxcentral.com)
Edward H. Jarvis, Secretary-Treasurer (edja@aol.com)

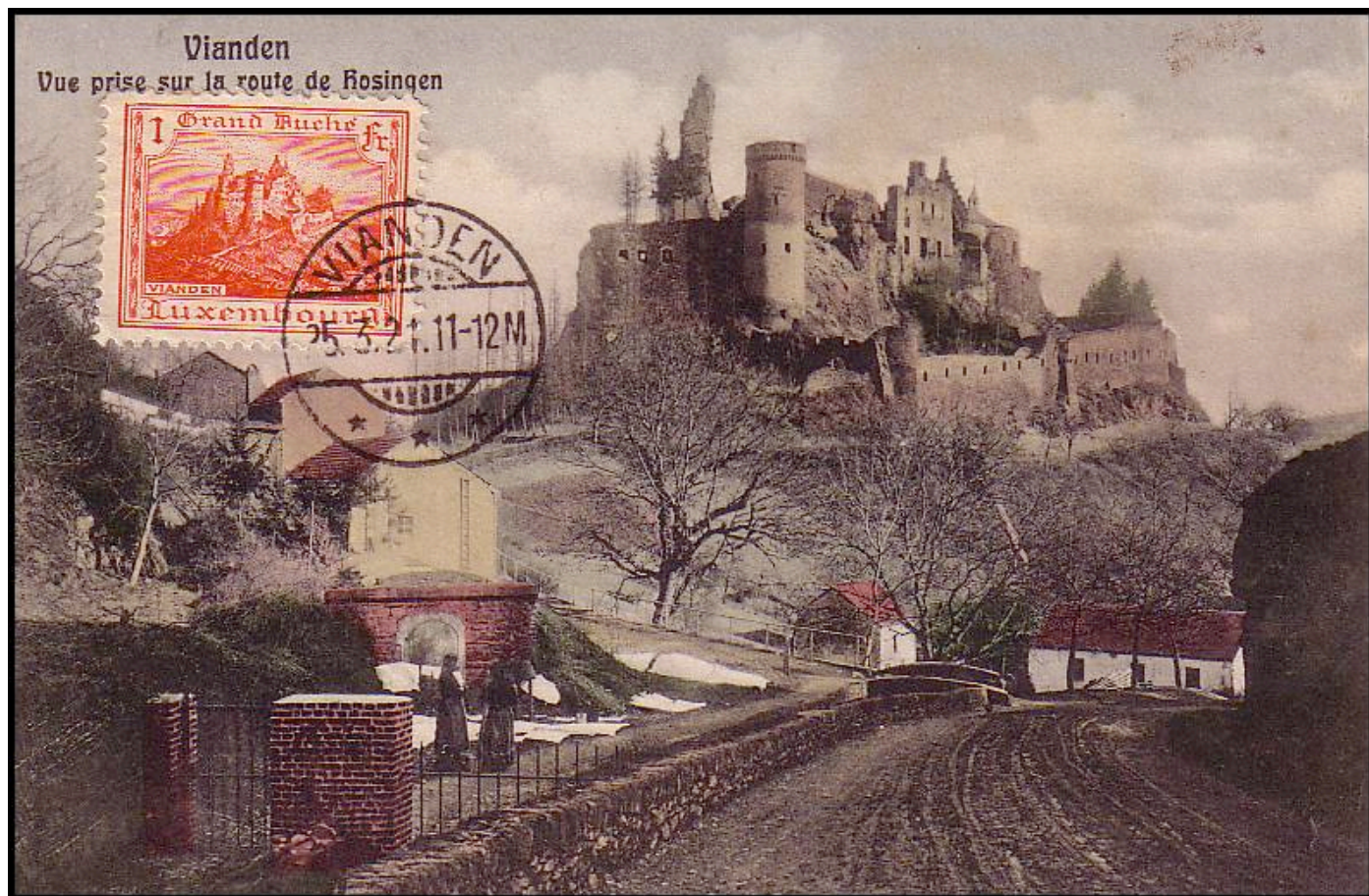
Vol. 7, No. 4 (whole #28) © 2004 Luxembourg Collectors Club and contributors

March 2004

President's Message

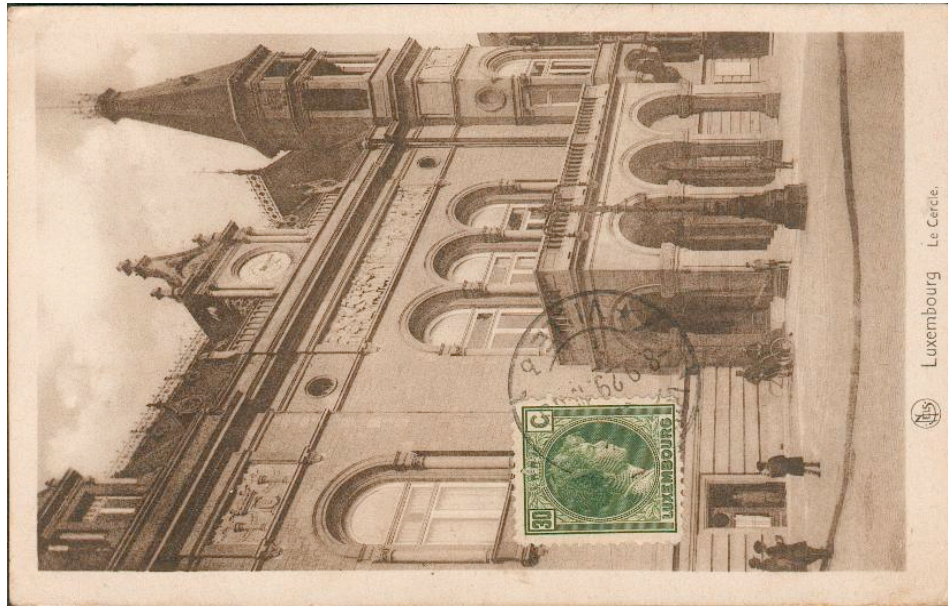
by Gary Little

I made a very nice purchase on eBay a few weeks ago. It is a maximum card for the 1 Fr red Vianden Castle stamp of 1921, the first stamp of Luxembourg not to show a monarch or the coat of arms. What makes the card especially appealing is that it is postmarked in Vianden on the *first day of issue* of the stamp (March 25, 1921), making it the third oldest first day cover I've ever seen from the Grand Duchy. The close price was only \$6.75, a bargain; I'm sure neither the seller nor prospective bidders recognized its significance.

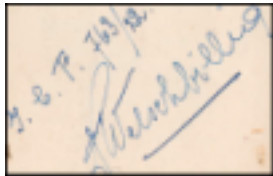


Postal Rates from Luxembourg to UPU Countries, 1907-1940, Part 3
by Gary Little [some images courtesy of AFW — Allan F. Wichelman]

[continued from the December 2003 issue of *Castellum*]

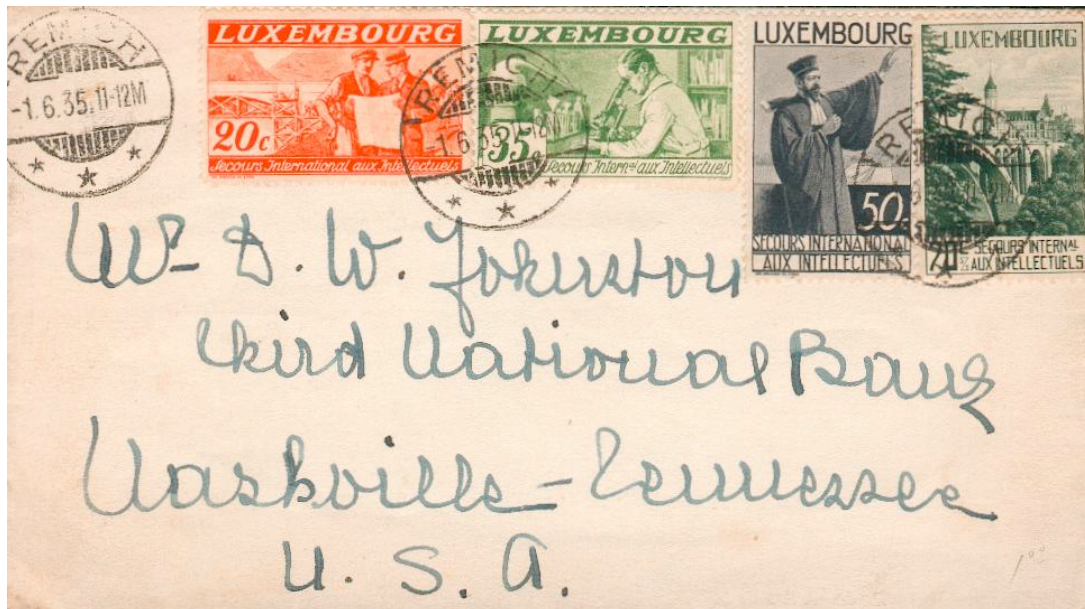


8.9.1929 Luxembourg-Ville to Fall River, Massachusetts
0.30 F = basic printed matter rate



This brief message on the address side of the postcard above allowed the card to be sent at the printed matter rate rather than the higher postcard rate.

Rate Period VII : December 1, 1929 — September 30, 1940



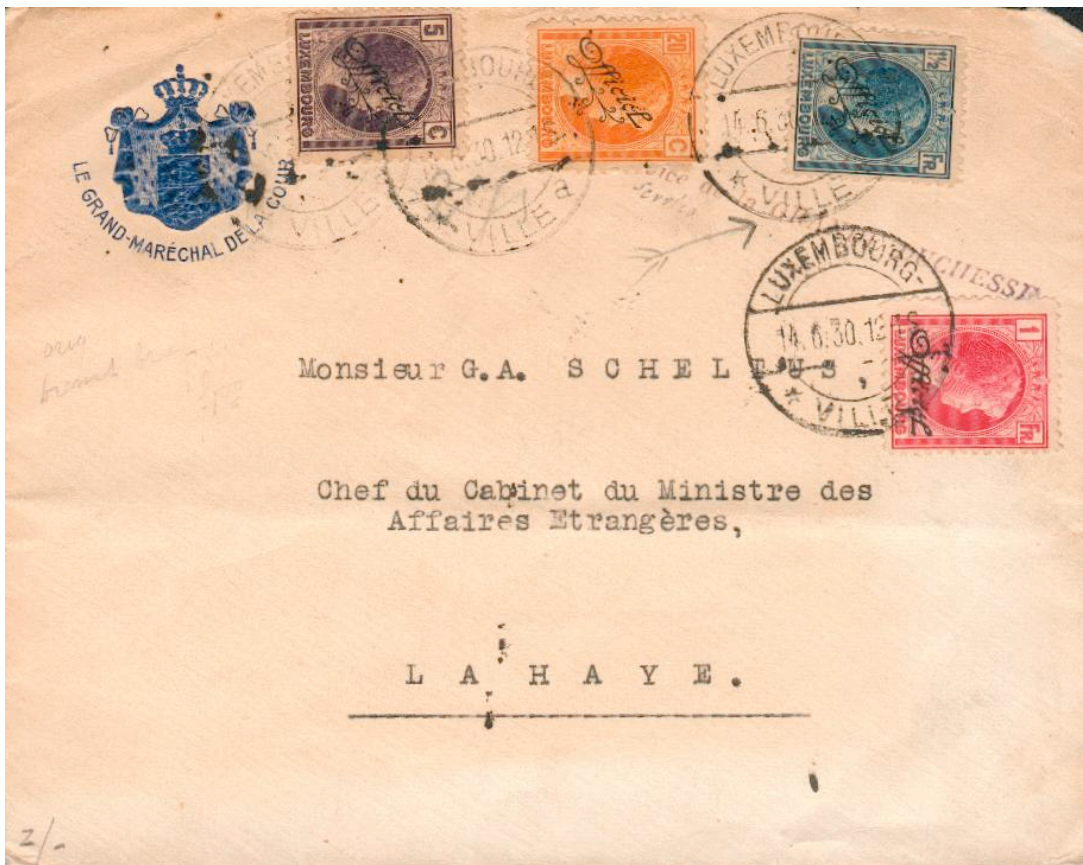
1.6.1935 Remich to Nashville, Tennessee
1.75 F = basic letter rate



1.5.1940 Luxembourg-Ville to Chicago, Illinois

1.75 F = basic letter rate

Note: Mailed nine days before the German invasion of the Grand Duchy; British censor tape



14.6.1930 Luxembourg-Ville to The Hague, The Netherlands

2.75 F = 1.75 F (basic letter rate) + 1.00 F (overweight: 1.00 F per 20 g)

Note: Service de la Grande-Duchesse straight-line rubber stamp marking



27.11.1930 Clervaux to Lakewood, New Jersey
 3.50 F = 1.75 F (basic letter rate) + 1.75 F (registration)



24.8.1935 Kayl to Fort Worth, Texas
 4.50 F = 1.75 F (basic letter rate) + 1.00 F (overweight: 1.00 F per 20 g) + 1.75 F (registration)
 Note: Commercial use of Intellectual stamps on cover



19.9.1934 Luxembourg-Ville to New York, New York

5.50 F = 1.75 F (basic letter rate) + 2.00 F (overweight: 1.00 F per 20 g) + 1.75 F (registration)

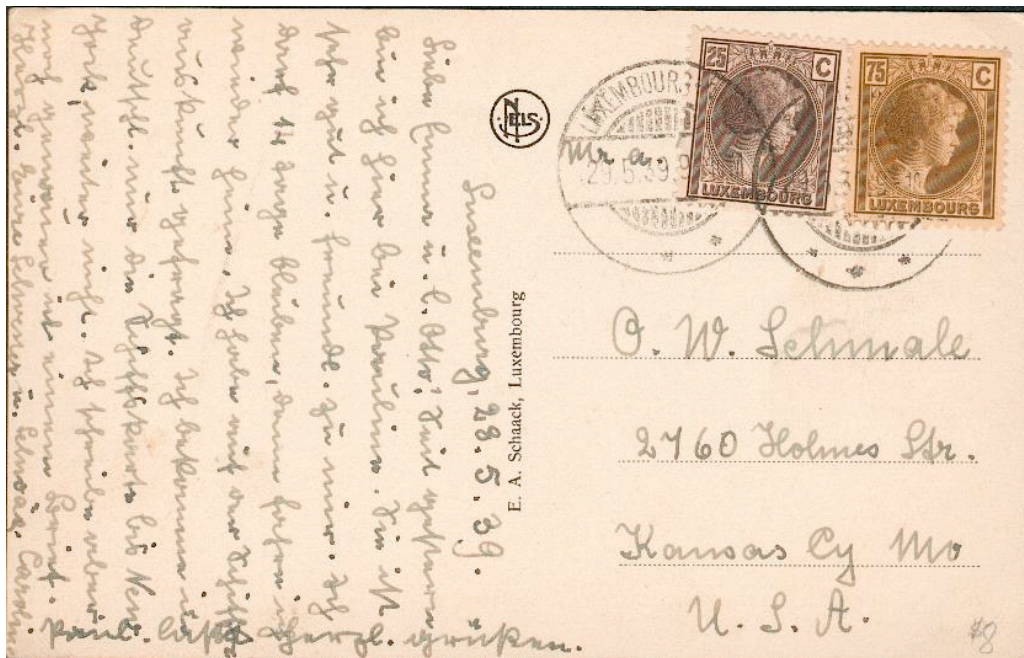


1.2.1940 Luxembourg-Ville to Cicero, Illinois [AFW]

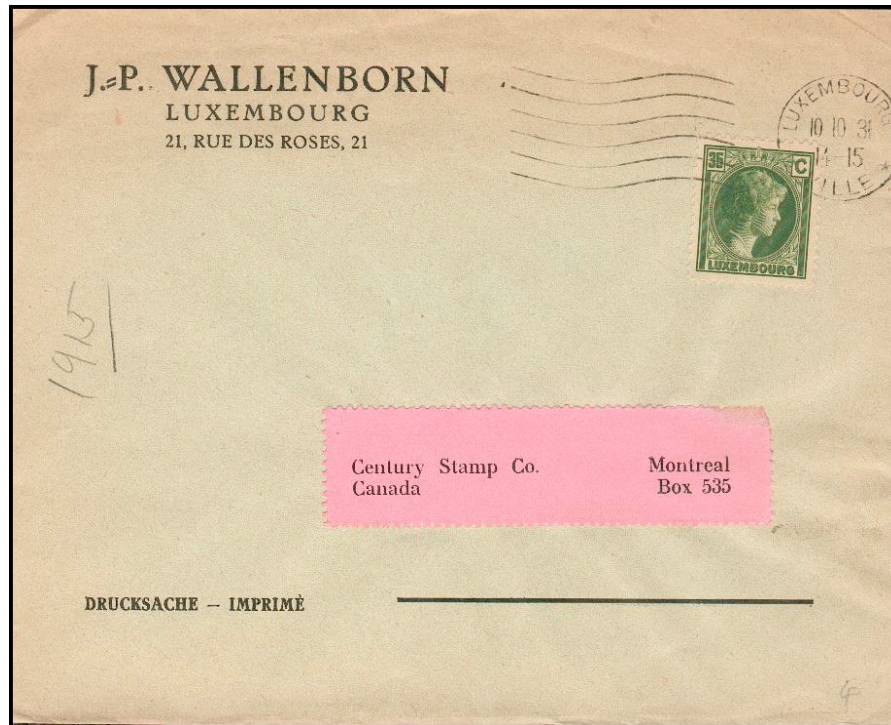
6.50F = 1.75 F (basic letter rate) + 3.00 F (overweight: 1.00 F per 20 g) + 1.75 F (registration)



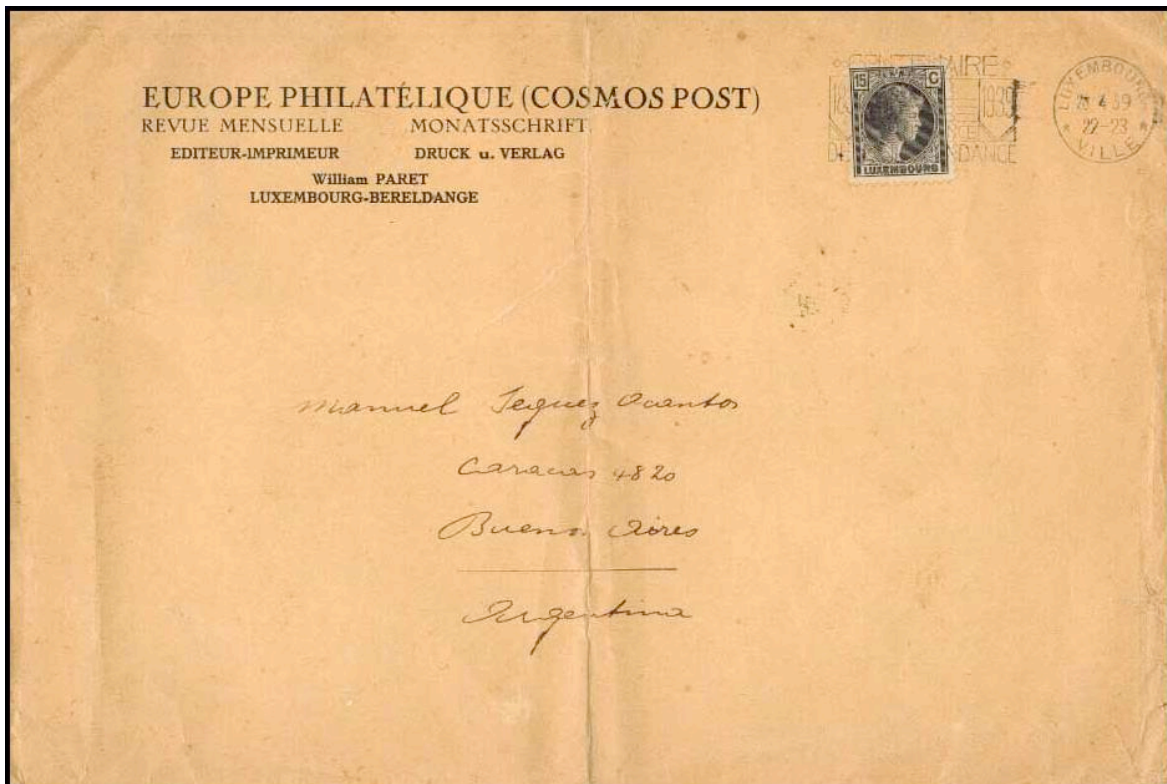
18.7.1931 Luxembourg-Ville to Vienna, Austria
 8.00 F = 1.75 F (basic letter rate) + 1.00 F (overweight: 1.00 F per 20 g) +
 1.75 F (registration) + 3.50 F (special delivery)



29.5.1939 Luxembourg-Gare to Kansas City, Missouri
 1.00 F = postcard rate



10.10.1931 Luxembourg-Ville to Montréal, Québec, Canada
0.35 F = basic printed matter rate



28.4.1939 Luxembourg-Ville to Buenos Aires, Argentina
0.15 F = basic newspaper rate

*Note: Newspapers qualified for a cheaper rate than other printed matter.
 The 15c per 50 g rate was in effect from January 1, 1927 until September 30, 1940.*

[conclusion of series]