
Castellum



Luxembourg
Collectors Club

3304 Plateau Drive
Belmont, CA 94002
U.S.A.

E-mail: lcc@luxcentral.com

Web: <http://www.luxcentral.com/stamps/LCC/>

Gary B. Little, President (gary@luxcentral.com)

Edward H. Jarvis, Secretary-Treasurer (edja@aol.com)

Vol. 7, No. 3 (whole #27) © 2003 Luxembourg Collectors Club and contributors

December 2003

President's Message

by Gary Little

You might say that I have *Georgia On My Mind* — Georgia, as in the former Soviet republic, that is. In October, a rather unusual 1930s postal stationery card from the USSR showed up in an eBay auction. The card included a preprinted promotional message in the Georgian language which uses the rarely seen *Mkhedruli* alphabet. But what made it especially appealing to me was the bilingual postmark — “Luxemburg” printed faintly in both Cyrillic and in *Mkhedruli*. This town no longer exists by this name, but I believe it was located near present day Bolnisi.

Unfortunately, I was outbid for the card by someone who I'm sure was not interested in the postmark at all. I contacted the seller, located in the Ukraine, by email and he told me that the town was probably named after Rosa Luxemburg, a leader of the socialism movement in the late 19th and early 20th century. A few days later I was delighted to hear from the seller once again when he offered to sell me the piece shown on the right. It bears the same postmark described above but this is a much more readable strike than the one on the card. You can clearly make out *Luxemburg* in Cyrillic in the upper arc (followed by *PTK* — Post & Telecommunications Office). The lower arc has the same text in *Mkhedruli* — trust me!

I have already reported this find to the FSPL in Luxembourg so they can include it in a revision of their *Catalogue des Cachets Étrangers avec le Motif “Luxembourg”* to which I have previously contributed several examples from U.S. and Canadian towns named Luxemb(o)urg(h).



Luxemburg, Georgia (former Soviet Union)

Postal Rates from Luxembourg to UPU Countries, 1907-1940, Part 2
 by Gary Little [some images courtesy of AFW — Allan F. Wichelman]

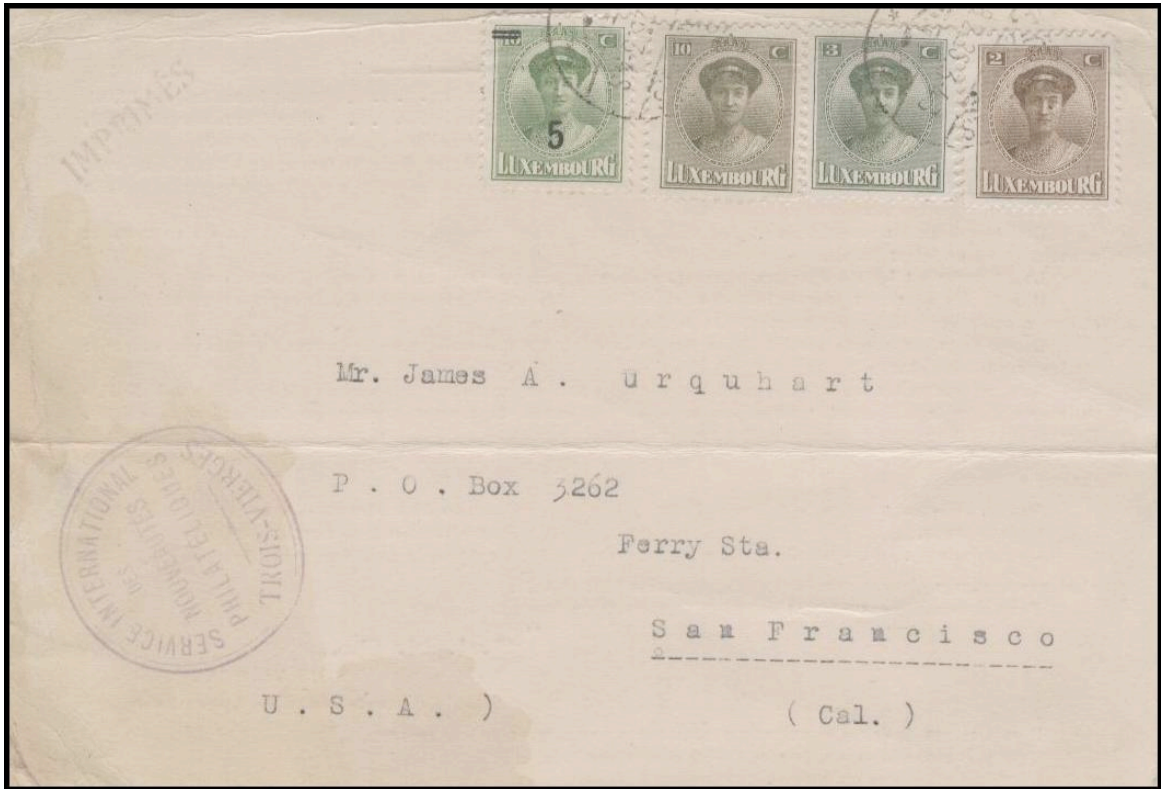
[continued from the September 2003 issue of *Castellum*]



6.11.1925 Grevenmacher to Rowena, Texas
 2.00 F = 1.00 F (basic letter rate) + 1.00 F (registration)



11.7.1926 Luxembourg-Ville to Port Chester, New York [AFW]
 0.60 F = postcard rate



8.2.1926 Troisvierges to San Francisco, California [AFW]
0.20 F = basic printed matter rate

Rate Period V : August 1, 1926 — October 31, 1926



20.10.1926 Wilwerwiltz to Los Angeles, California [AFW]
1.25 F = basic letter rate



27.8.1926 Differdange to New York, New York

4.00 F = 1.25 F (basic letter rate) + 1.50 F (overweight: 0.75 F per 20 g) + 1.25 F (registration)

Note: This rate period lasted only three months, making even this tattered cover quite collectible.



18.9.1926 Luxembourg-Ville to Vienna, Austria

10.00 F = 1.25 F (basic letter rate) + 7.50 F (overweight: 0.75 F per 20 g) + 1.25 F (registration)



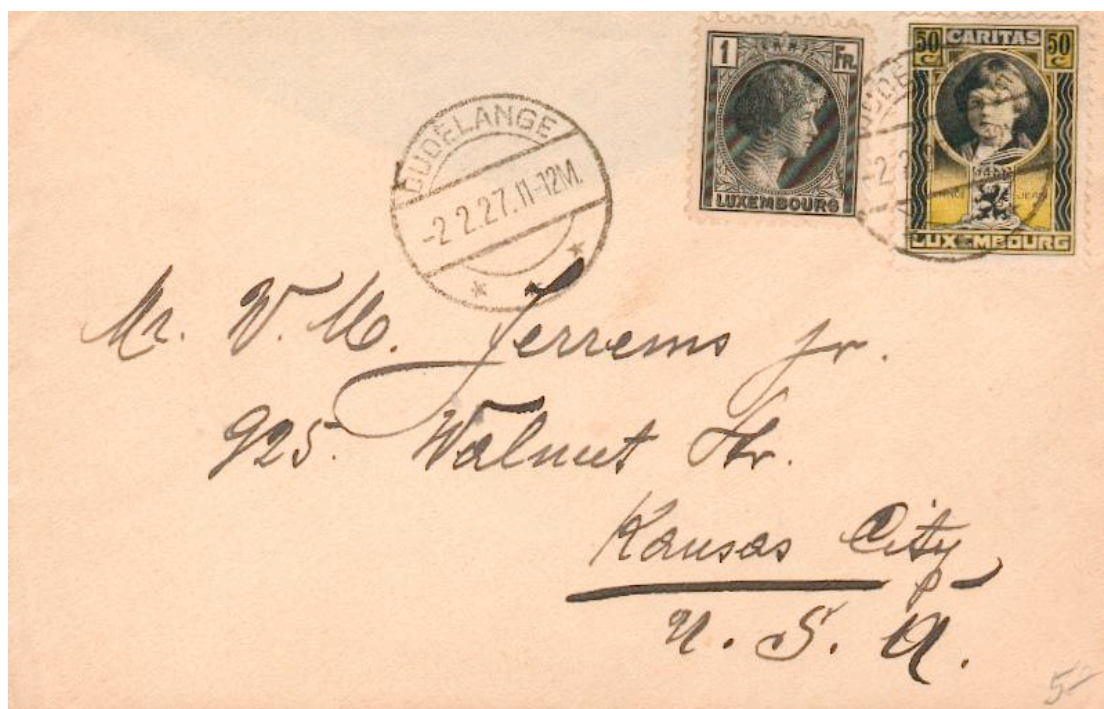
12.8.1926 Vianden to Haarlem, The Netherlands [AFW]

0.75 F = postcard rate



24.10.1926 Clervaux to Vienna, Austria [AFW]
 0.25 F = basic printed matter rate

Rate Period VI : November 1, 1926 — November 30, 1929



2.2.1927 Dudelange to Kansas City, Missouri
 1.50 F = basic letter rate



10.9.1927 Luxembourg-Ville to Senigallia, Italy redirected to Geneva, Switzerland
 3.00 F = 1.50 F (basic letter rate) + 1.50 F (registration)



11.6.1927 Rumelange to Chicago, Illinois
 3.90 F = 1.50 F (basic letter rate) + 0.90 F (overweight: 0.90 F per 20 g) + 1.50 F (registration)



12.11.1926 Wilwerwiltz to Los Angeles, California

4.80 F = 1.50 F (basic letter rate) + 1.80 F (overweight: 0.90 F per 20 g) + 1.50 F (registration)



22.7.1929 Luxembourg-Troisvierges Ambulant to Syracuse, New York

0.90 F = postcard rate

[to be continued in the next issue of *Castellum*]